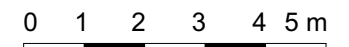
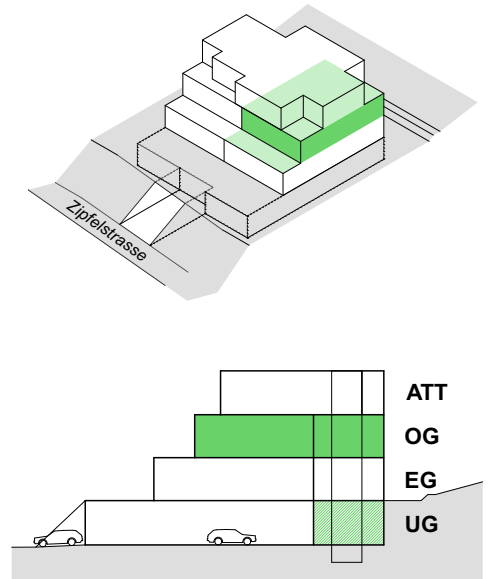
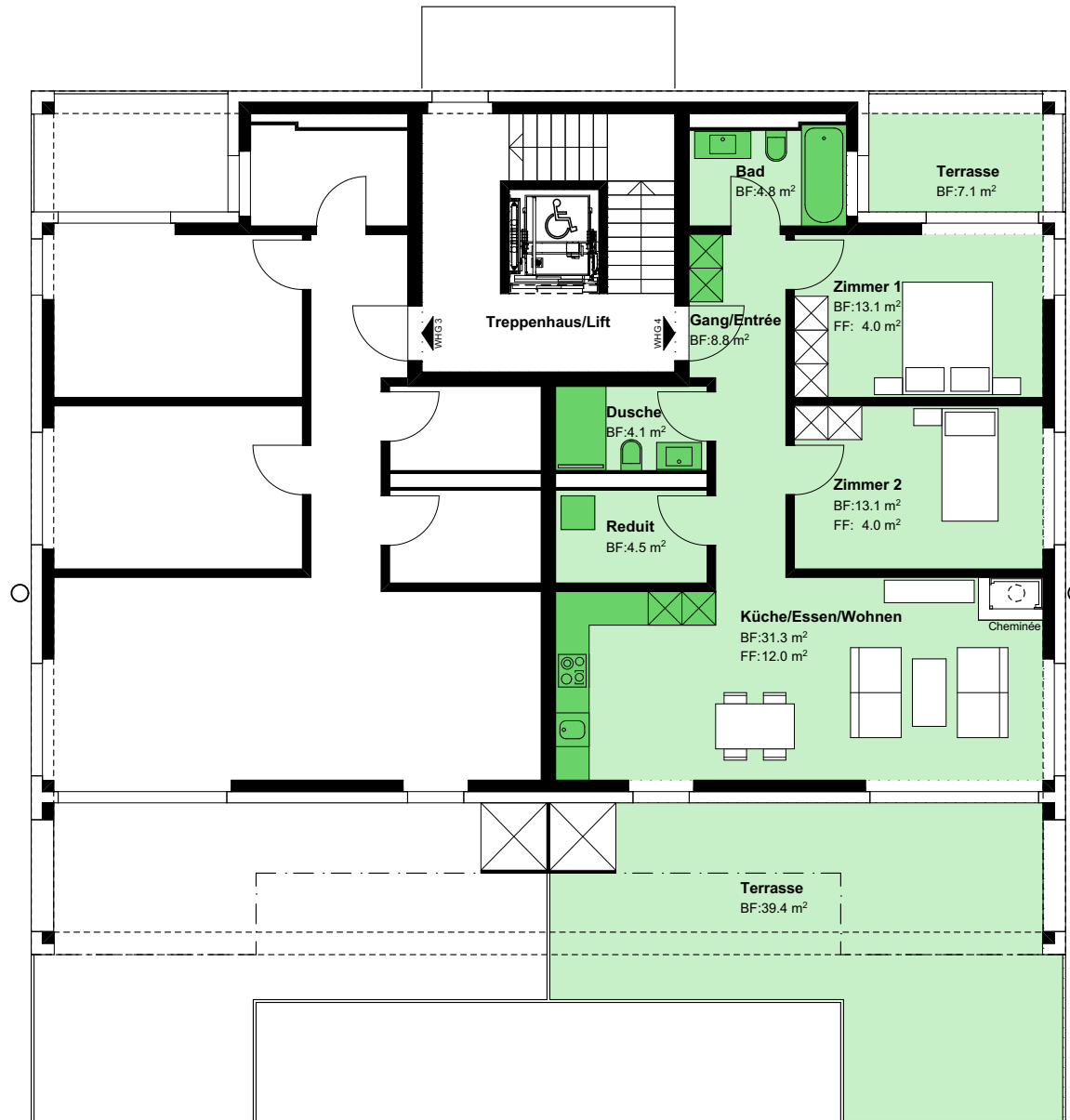
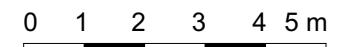
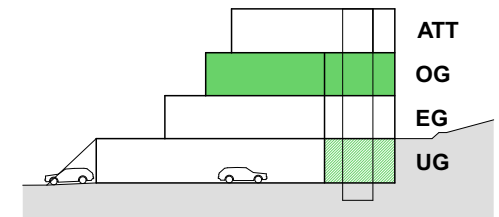
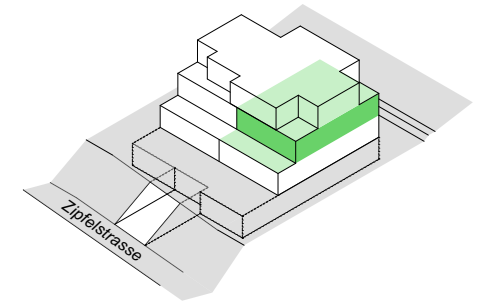
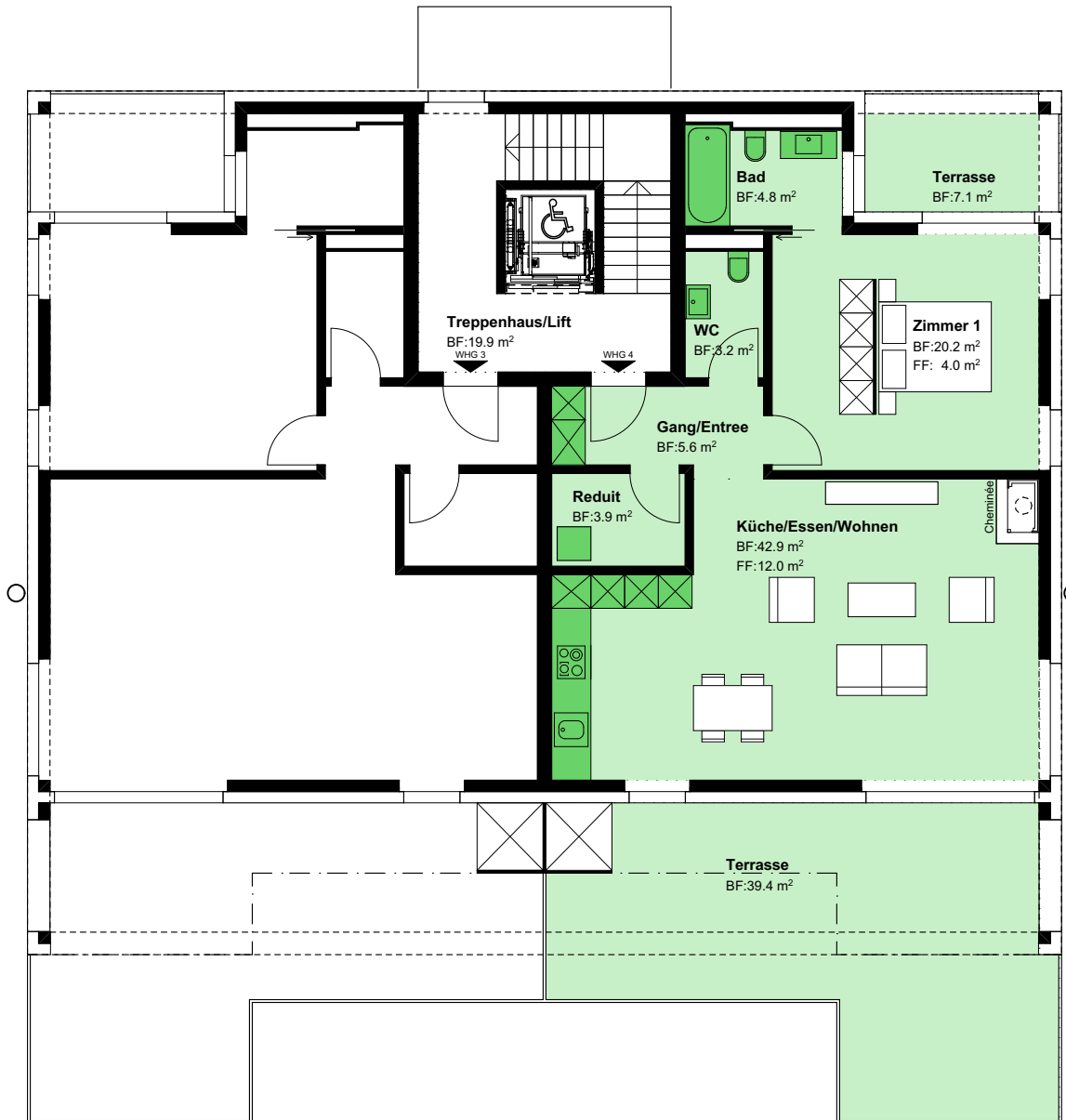


Projekt "Zipfel 16"
WHG 4, 3.5 Zi.-Wohnung, 83.8m² Obergeschoss
Keller 13,8m², Balkon/Terrasse 46.5m²

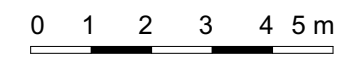
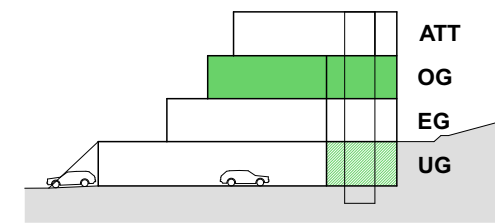
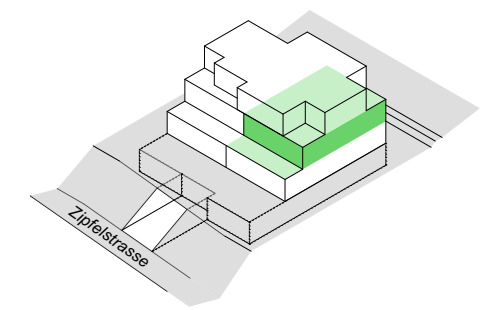
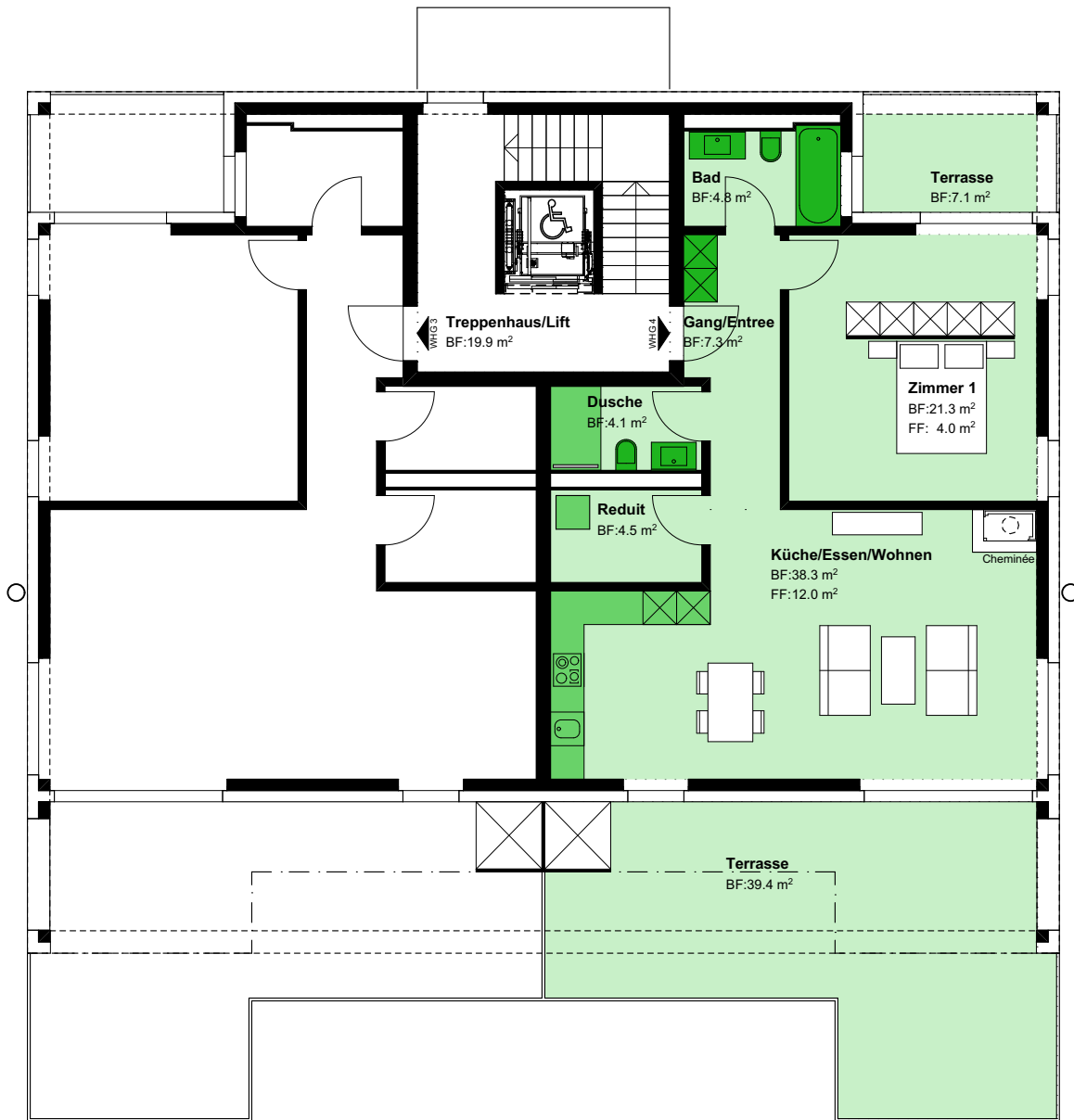


Projekt "Zipfel 16"
WHG 4, 2.5 Zi.-Wohnung, 83.8m² Obergeschoss
Keller 13,8m², Balkon/Terrasse 46.5m², Variante 1



Projekt "Zipfel 16"
WHG 4, 2.5 Zi.-Wohnung, 83.8m² Obergeschoss
Keller 13,8m², Balkon/Terrasse 46.5m², Variante 2

ZIPFEL
PROJEKT KLOTEN



Projekt "Zipfel 16"

Einstellhalle und Untergeschoss

